

2025 ParkScore Index®

San Antonio, TX

57

50.6

The ParkScore index is a national comparison of park systems across the 100 most populated cities in the United States. Published annually, the index measures park systems according to five categories reflective of an excellent city park system: access, investment, amenities, acreage, and equity. While the rankings provide fodder for friendly competition, the goal each year of publishing the index is to help leaders advocate for needed park resources and provide relevant data to inform local park improvement efforts. To facilitate a fair comparison across cities, the index aggregates across all public and private organizations supporting parks in each city.

This year, San Antonio received a score of 50.6 points out of 100 based on an average of the five categories. There are 15 measures across these categories, with points awarded based on how San Antonio compares to the other 99 cities for that particular measure.

68

out of 100
points

Acreage

The acreage score indicates the relative abundance of large 'destination' parks, which include large natural areas that provide critical mental health as well as climate and conservation benefits. There are two components to the acreage score. Of these, San Antonio scores about average on the percentage of the city's overall area that is dedicated to parkland (41 out of 100 points), and among the highest on median park size (94 out of 100 points).

26

out of 100
points

Access

The access score indicates the percentage of a city's residents that live within a walkable half-mile of a park - the average distance that most people are willing to walk to reach a destination. With 47% of its population living this close to a park, San Antonio scores below average in this category.

43

out of
100 points

Investment

The investment score indicates the relative financial health of a city's park system, which is essential to ensuring the park system is maintained at a high level. This value aggregates park and recreation spending across all agencies and organizations within the city, including monetized volunteer hours. In San Antonio, a total of \$140 per capita is spent each year on publicly accessible parks and recreation, about average for this category.

52

out of
100 points

Amenities

The amenities score indicates the relative abundance of park activities popular among a diverse selection of user groups (kids, teenagers, adults, seniors). Overall for this category, San Antonio scores about average, though it varies by amenity: basketball hoops (28 points out of 100), sport fields and diamonds (30 points), dog parks (46 points), playgrounds (16 points), senior and rec centers (86 points), permanent restrooms (100 points), and splashpads (22 points).

64

out of
100 points

Equity

The equity score indicates the fairness in the distribution of parks and park space between neighborhoods by race and income. This category is an average of two types of metrics. On the first set of measures, San Antonio scores below average: 29 out of 100 points for people of color living within a 10-minute walk of a park and 28 points for low-income households. The second set of measures compare the distribution of park space. In San Antonio, residents living in neighborhoods of color have access to 30% more nearby park space than those living in white neighborhoods (100 points out of 100). Residents living in lower-income neighborhoods have access to 58% more nearby park space than those in higher-income neighborhoods (100 points out of 100).

For additional information on the scoring methodology, please visit www.tpl.org/parkscore/about

2025 ParkScore Index®

San Antonio, TX

2025 Rank

57

Points

50.6



Values for San Antonio, TX:

City-wide total City-wide 'per capita' City-wide score*

Value needed for:

1 pt 100 pts

Acreage (68 Points)

Parkland as a percentage of city area	28,842 acres	9.1% of city area	41 points	2.5%	18.6%
Median Park Size	10.2 acres	10.2 acres	94 points	.58	11

Access (26 Points)

Percent of population within a 10-minute walk of a park with public access	47%	26 points	28%	100%
--	-----	--------------	-----	------

Equity (64 Points)

Percent of people of color within a 10-minute walk of a park	49%	29 points	28%	100%
Percent of low-income households within a 10-minute walk of a park	51%	28 points	32%	100%
Residents in neighborhoods of color have _____ park space as those in white neighborhoods	30% more	100 points	89% less	25% more
Low-income neighborhoods have _____ park space as those in high-income neighborhoods	58% more	100 points	85% less	25% more

Investment (43 Points)

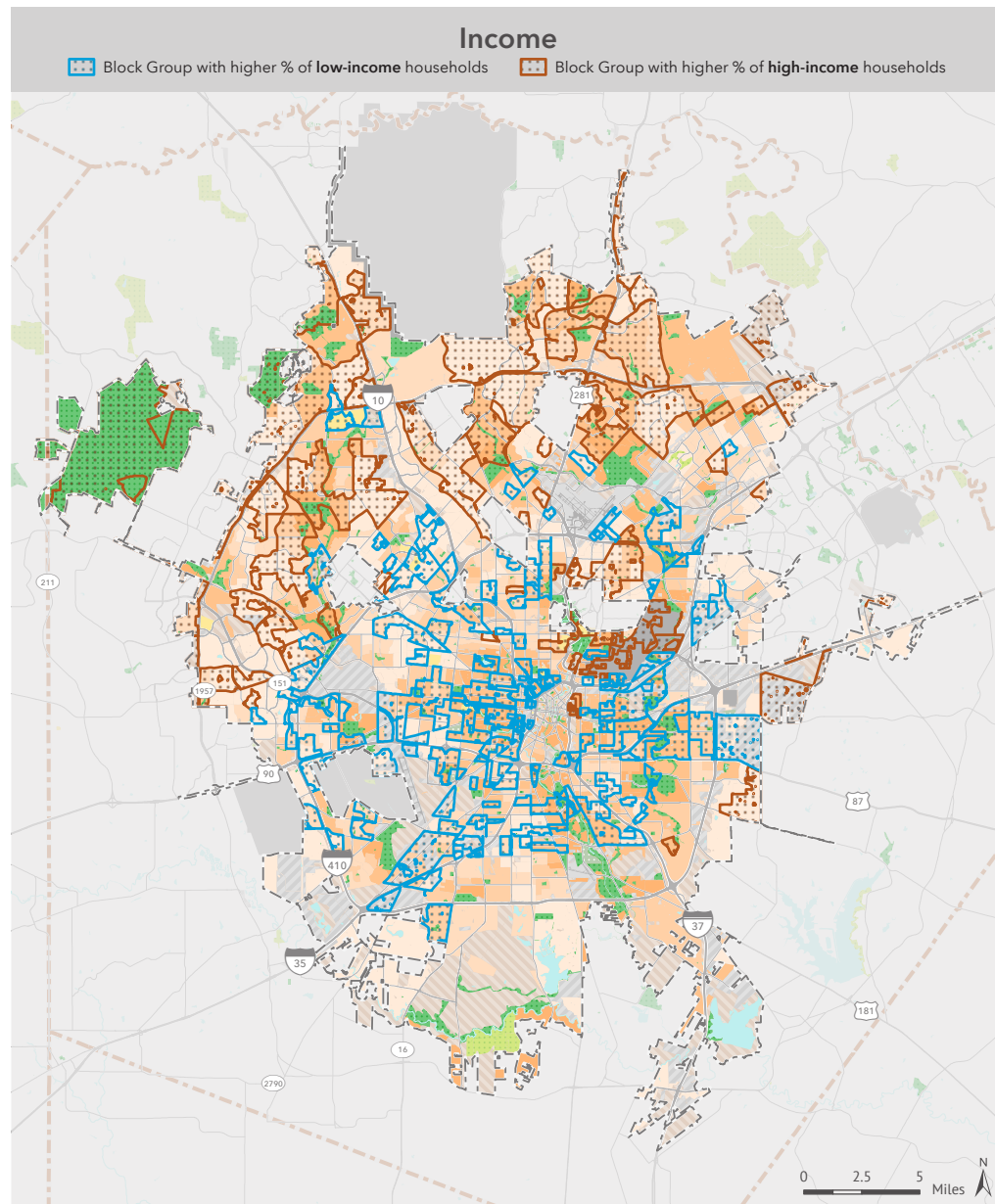
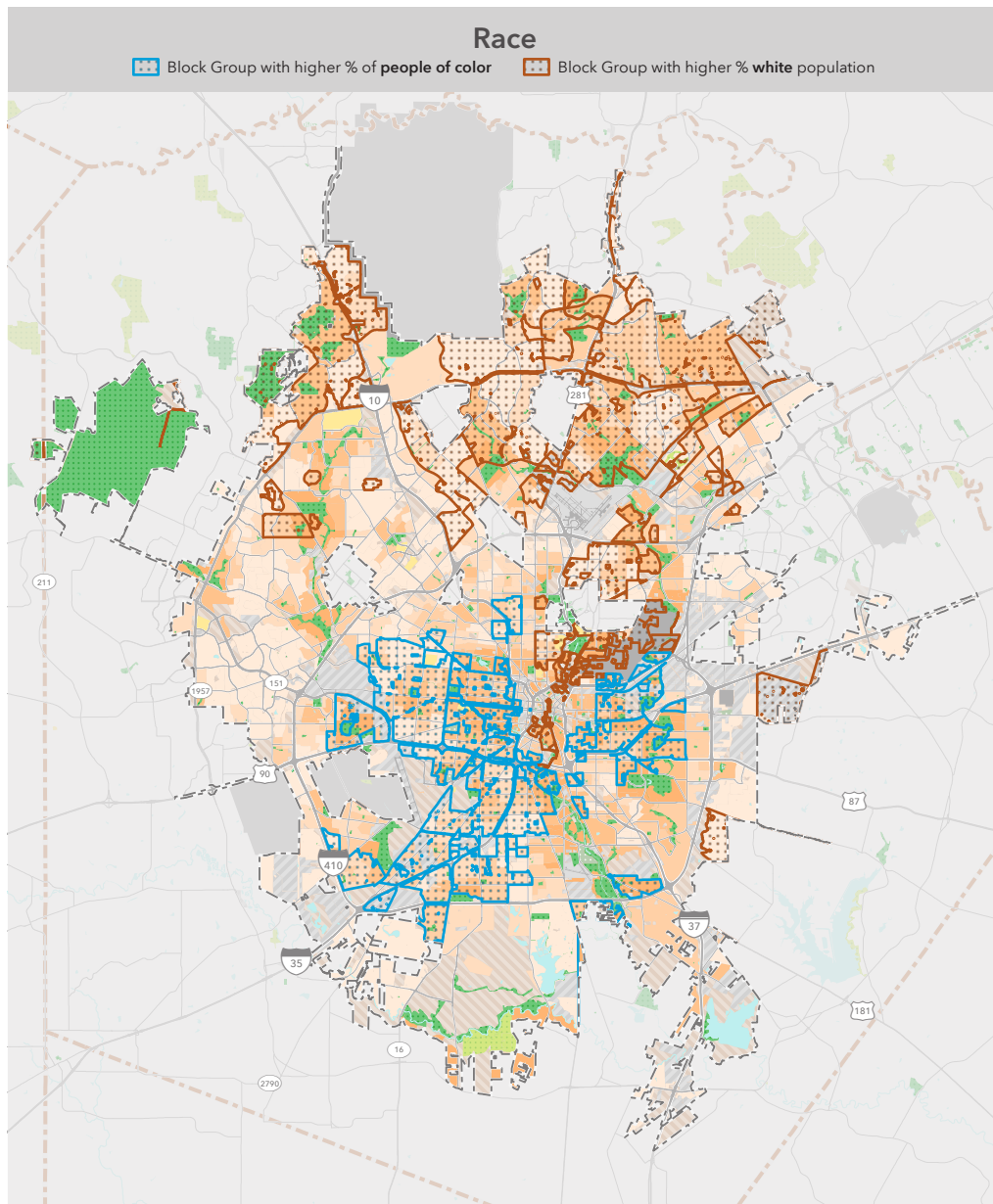
Annual park investment (three-year average)	\$202,789,281	\$ 140 per resident	43 points	\$44	\$266
---	---------------	------------------------	--------------	------	-------

Amenities (52 Points)

Basketball hoops	359 hoops	2.49 per 10,000 residents	28 points	.63	7.29
Sport fields	326 fields/diamonds	2.26 per 10,000 residents	30 points	.96	5.39
Dog parks	20 dog parks	1.38 per 100,000 residents	46 points	.32	2.62
Playgrounds	218 playgrounds	5.97 per 10,000 children	16 points	2.78	23.16
Senior/Rec centers	96 centers	1.33 per 20,000 residents	86 points	.17	1.52
Restrooms	553 restrooms	3.83 per 10,000 residents	100 points	.30	3.18
Splashpads	11 splashpads	3.01 per 100,000 children	22 points	.35	12.43

*For each of the 15 measures, cities are scored on a 1-100 scale (100 is the highest) relative to the other 99 cities. To adjust for outliers, 100 points is awarded for any city that has more than double the national median for that measure. The amenity average excludes the lowest scoring amenity.





2025 ParkScore® index: **Equity**

SAN ANTONIO, TEXAS

The Equity category of the ParkScore® index awards points in part based on the difference in nearby park space between neighborhoods in a city:

- On a per person basis, ratio of nearby public park space between communities of color and white communities
- On a per person basis, ratio of nearby public park space between low-income communities and high-income communities












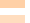
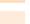

Nearby park space per person effectively measures the available park space within a 10-minute walk of a micro-neighborhood, identified by the set of block groups containing the 20% of the city population with the highest concentrations of people of color or white population and high-income or low-income households. Households with income less than 75% of city median income (less than

\$51,000 in San Antonio) are considered low-income; households with income greater than 125% of city median income (greater than \$85,000 in San Antonio) are high-income.

In San Antonio, neighborhoods of color have 30% more park space than white neighborhoods, and low-income neighborhoods have 58% more than high-income neighborhoods.

The metrics for people of color reflect each of the Census-designated race/ethnicity groups: Black, Hispanic, and Indigenous and Native American, Asian Americans, Pacific Islanders, multiple races, and other communities of color.

Demographic profiles are derived from 2024 forecast census block points provided by Esri.

-  Park with public access
-  Other park or open space
-  Cemetery
-  University
-  Military
-  Industrial
-  Vacant zero population area
-  City boundary
-  County boundary
- Park acres per person**
 -  Very high
 -  High
 -  Moderate
 -  Low
 -  Very low

Special thanks to the following data providers: San Antonio, Esri, OSM, CDC, EPA. Information on this map is provided for purposes of discussion and visualization only. Map created by Trust for Public Land on April 15, 2025. Trust for Public Land and Trust for Public Land logo are federally registered marks of Trust for Public Land. Copyright © 2025 Trust for Public Land. www.tpl.org

