

# 2026 ParkScore Index®

30

62.4

Frisco, TX

The ParkScore index is a national comparison of park systems across the 100 most populated cities in the United States. Published annually, the index measures park systems according to five categories reflective of an excellent city park system: access, investment, amenities, acreage, and equity. While the rankings provide fodder for friendly competition, the goal each year of publishing the index is to help leaders advocate for needed park resources and provide relevant data to inform local park improvement efforts. To facilitate a fair comparison across cities, the index aggregates across all public and private organizations supporting parks in each city.

This year, Frisco received a score of 62.4 points out of 100 based on an average of the five categories. There are 15 measures across these categories, with points awarded based on how Frisco compares to the other 99 cities for that particular measure.

52

out of 100  
points

## Acreage

The acreage score indicates the relative abundance of large ‘destination’ parks, which include large natural areas that provide critical mental health as well as climate and conservation benefits. There are two components to the acreage score. Of these, Frisco scores below average on the percentage of the city’s overall area that is dedicated to parkland (16 out of 100 points), and among the highest on median park size (87 out of 100 points).

58

out of 100  
points

## Access

The access score indicates the percentage of a city’s residents that live within a walkable half-mile of a park – the average distance that most people are willing to walk to reach a destination. With 69.3% of its population living this close to a park, Frisco scores about average in this category.

98

out of 100  
points

## Investment

The investment score indicates the relative financial health of a city’s park system, which is essential to ensuring the park system is maintained at a high level. This value aggregates park and recreation spending across all agencies and organizations within the city, including monetized volunteer hours. In Frisco, a total of \$304 per capita is spent each year on publicly accessible parks and recreation, among the highest for this category.

42

out of 100  
points

## Amenities

The amenities score indicates the relative abundance of park activities popular among a diverse selection of user groups (kids, teenagers, adults, seniors). Overall for this category, Frisco scores about average, though it varies by amenity: basketball hoops (100 points out of 100), sport fields and diamonds (37 points), dog parks (21 points), playgrounds (54 points), senior and rec centers (1 points), permanent restrooms (5 points), and splashpads (32 points).

63

out of 100  
points

## Park Space Equity

The equity score indicates the fairness in the distribution of parks and park space between neighborhoods by race and income. This category is an average of two types of metrics. On the first set of measures, Frisco scores about average: 57 out of 100 points for people of color living within a 10-minute walk of a park and 55 points for low-income households. The second set of measures compare the distribution of park space. In Frisco, residents living in neighborhoods of color have access to 12% less nearby park space than those living in white neighborhoods (77 points out of 100). Residents living in lower-income neighborhoods have access to 26% less nearby park space than those in higher-income neighborhoods (62 points out of 100).

For additional information on the scoring methodology, please visit [www.tpl.org/parkscore/about](http://www.tpl.org/parkscore/about)

# 2026 ParkScore Index®

Frisco, TX

2026 Rank

**30**

Points

**62.4**

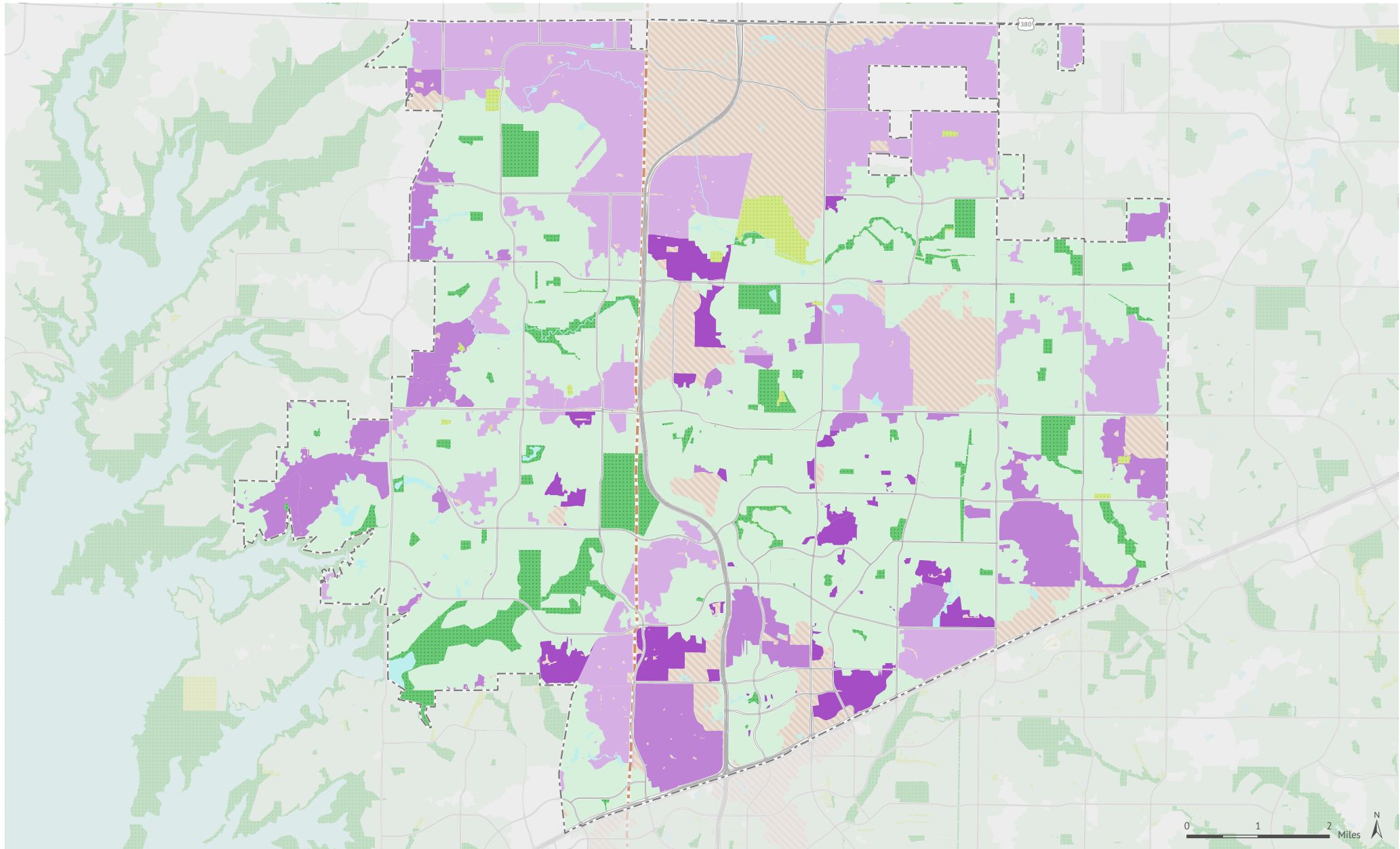


Values for Frisco, TX:

Value needed for:

	City-wide total	City-wide 'per capita'	City-wide score*	1 pt	100 pts
<b>Acreage (52 Points)</b>					
Parkland as a percentage of city area	2,286 <i>acres</i>	5.2% <i>of city area</i>	16 <i>points</i>	2.7%	18.7%
Median Park Size	9.5	9.5 <i>acres</i>	87 <i>points</i>	.58	10.80
<b>Access (58 Points)</b>					
Percent of population within a 10-minute walk of a park with public access		69.3%	58 <i>points</i>	28%	100%
<b>Park Space Equity (63 Points)</b>					
Percent of people of color within a 10-minute walk of a park		69%	57 <i>points</i>	28%	100%
Percent of low-income households within a 10-minute walk of a park		69%	55 <i>points</i>	31%	100%
Residents in neighborhoods of color have _____ park space as those in white neighborhoods		12% less	77 <i>points</i>	87% less	10% more
Low-income neighborhoods have _____ park space as those in high-income neighborhoods		26% less	62 <i>points</i>	85% less	10% more
<b>Investment (98 Points)</b>					
Annual park investment (three-year average)	\$71,471,832	\$ 304 <i>per resident</i>	98 <i>points</i>	\$47	\$308
<b>Amenities (42 Points)</b>					
Basketball hoops	186 <i>hoops</i>	7.88 <i>per 10,000 residents</i>	100 <i>points</i>	1	7.79
Athletic fields & diamonds	62 <i>fields/diamonds</i>	2.63 <i>per 10,000 residents</i>	37 <i>points</i>	.97	5.50
Dog parks	2 <i>dog parks</i>	0.85 <i>per 100,000 residents</i>	21 <i>points</i>	.31	2.90
Playgrounds	96 <i>playgrounds</i>	14.34 <i>per 10,000 children</i>	54 <i>points</i>	2.88	23.90
Senior/Rec centers	2 <i>centers</i>	0.17 <i>per 20,000 residents</i>	1 <i>points</i>	.16	1.54
Restrooms	10 <i>restrooms</i>	0.42 <i>per 10,000 residents</i>	5 <i>points</i>	.30	3.19
Splashpads	3 <i>splashpads</i>	4.48 <i>per 100,000 children</i>	32 <i>points</i>	.69	12.68

\*For each of the 15 measures, cities are scored on a 1-100 scale (100 is the highest) relative to the other 99 cities. To adjust for outliers, 100 points is awarded for any city that has more than double the national median for that measure. The amenity average excludes the lowest scoring amenity.



# 2026 ParkScore® index: Access

## FRISCO, TEXAS

The Access category of the ParkScore® index awards points based on the percentage of the population within a 10-minute walk of a public park. This analysis is provided via the ParkServe® mapping application, which identifies the population living within a 10-minute walk of a park by creating dynamic 1/2-mile service areas (10-minute walking distance) for all public parks. In this analysis, service areas use the street network to determine walkable distance (streets such as highways, freeways, and interstates are considered barriers).

In Frisco, 69% of the population lives within a 10-minute walk of a park. Among the remaining 72,550 people without access to a nearby park, Trust for Public Land suggests **where to prioritize the development of new parks** to reduce this gap. This prioritization is based on a comprehensive index of six equally-weighted demographic and environmental metrics.

The six metrics on which the prioritization is based:

- Population density\*
- Density of low income households (households with income less than 75% of the urban area median income; less than \$99,000 in Frisco)\*
- Density of people of color\*
- Community health (a combined index based on the rate of poor mental health and low physical activity from the 2025 CDC PLACES census tract dataset)
- Urban heat islands (surface temperature at least 1.25 degrees greater than city mean surface temperature from Trust for Public Land, based on Landsat 8 satellite imagery)
- Pollution burden (air toxics respiratory hazard index from 2024 EPA EJScreen)

\*Derived from 2025 forecast census block points produced by Esri.

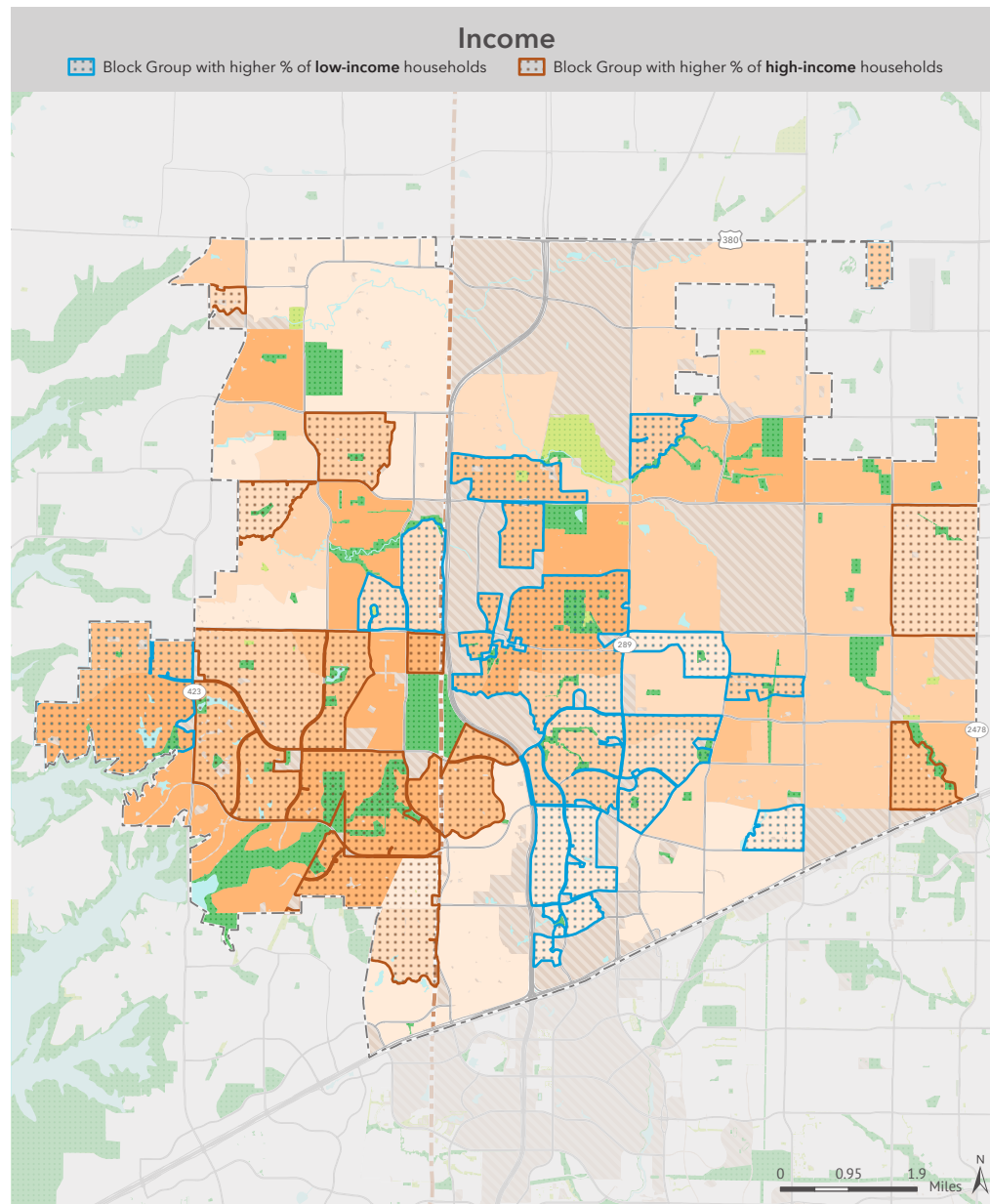
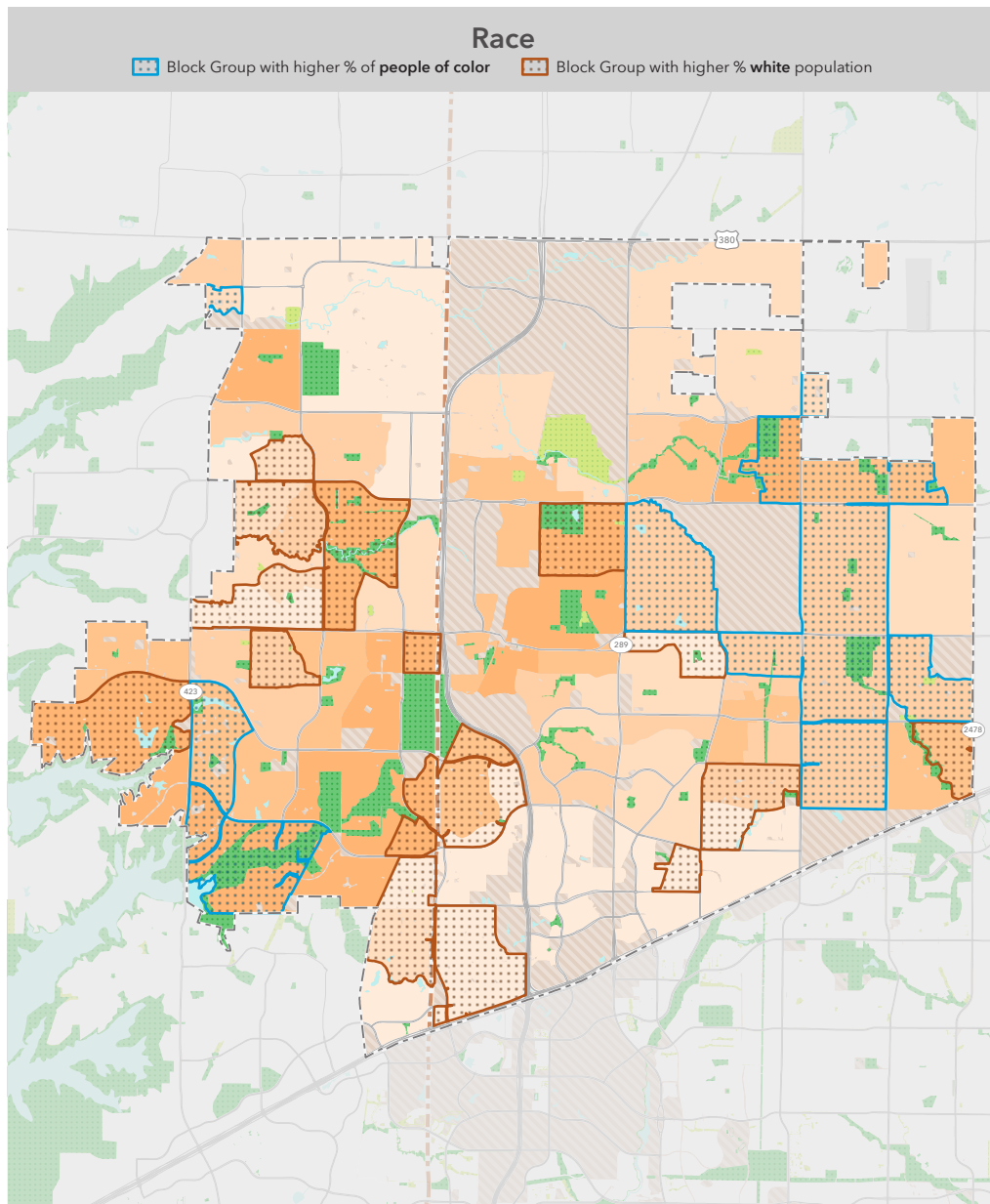
**Priority areas for new parks**  
(outside of 10-minute walk service areas of parks with public access)

- Very high priority
- High priority
- Moderate priority
- Park with public access
- Other park or open space
- 10-minute walk (half-mile) service area of park with public access

**Legend:**

- Cemetery
- University
- Military
- Industrial
- Vacant zero population area
- City boundary
- County boundary

Special thanks to the following data providers: Frisco, Esri, OSM, CDC, EPA. Information on this map is provided for purposes of discussion and visualization only. Map created by Trust for Public Land on April 3, 2026. Trust for Public Land and Trust for Public Land logo are federally registered marks of Trust for Public Land. Copyright © 2026 Trust for Public Land. [www.tpl.org](http://www.tpl.org)



# 2026 ParkScore® index: **Equity**

## FRISCO, TEXAS

The Equity category of the ParkScore® index awards points in part based on the difference in nearby park space between neighborhoods in a city:

- On a per person basis, ratio of nearby public park space between communities of color and white communities
- On a per person basis, ratio of nearby public park space between low-income communities and high-income communities

Nearby park space per person effectively measures the available park space within a 10-minute walk of a micro-neighborhood, identified by the set of block groups containing the 20% of the city population with the highest concentrations of people of color or white population and high-income or low-income households. Households with income less than 75% of city median income (less than

\$99,000 in Frisco) are considered low-income; households with income greater than 125% of city median income (greater than \$165,000 in Frisco) are high-income.

In Frisco, neighborhoods of color have 12% less park space than white neighborhoods, and low-income neighborhoods have 26% less than high-income neighborhoods.

The metrics for people of color reflect each of the Census-designated race/ethnicity groups: Black, Hispanic, and Indigenous and Native American, Asian Americans, Pacific Islanders, multiple races, and other communities of color.

Demographic profiles are derived from 2025 forecast census block points provided by Esri.

<span style="display: inline-block; width: 15px; height: 10px; background-color: #008000; border: 1px solid black;"></span> Park with public access	<span style="border-bottom: 1px dashed gray; width: 20px; display: inline-block;"></span> City boundary
<span style="display: inline-block; width: 15px; height: 10px; background-color: #90EE90; border: 1px solid black;"></span> Other park or open space	<span style="border-bottom: 1px dashed orange; width: 20px; display: inline-block;"></span> County boundary
<span style="display: inline-block; width: 15px; height: 10px; background-color: #90EE90; border: 1px solid black; border-style: dotted;"></span> Cemetery	<b>Park acres per person</b>
<span style="display: inline-block; width: 15px; height: 10px; background-color: #FFFF00; border: 1px solid black;"></span> University	<span style="display: inline-block; width: 15px; height: 10px; background-color: #FF8C00; border: 1px solid black;"></span> Very high
<span style="display: inline-block; width: 15px; height: 10px; background-color: #808080; border: 1px solid black;"></span> Military	<span style="display: inline-block; width: 15px; height: 10px; background-color: #FFA500; border: 1px solid black;"></span> High
<span style="display: inline-block; width: 15px; height: 10px; background-color: #D3D3D3; border: 1px solid black;"></span> Industrial	<span style="display: inline-block; width: 15px; height: 10px; background-color: #FFDAB9; border: 1px solid black;"></span> Moderate
<span style="display: inline-block; width: 15px; height: 10px; background-color: #D3D3D3; border: 1px solid black; border-style: dotted;"></span> Vacant zero population area	<span style="display: inline-block; width: 15px; height: 10px; background-color: #FFB6C1; border: 1px solid black;"></span> Low
	<span style="display: inline-block; width: 15px; height: 10px; background-color: #FFDAB9; border: 1px solid black;"></span> Very low

Special thanks to the following data providers: Frisco, Esri, OSM, CDC, EPA. Information on this map is provided for purposes of discussion and visualization only. Map created by Trust for Public Land on April 6, 2026. Trust for Public Land and Trust for Public Land logo are federally registered marks of Trust for Public Land. Copyright © 2026 Trust for Public Land. [www.tpl.org](http://www.tpl.org)